

jems installation on Windows 7, 8 or 10

P. Stadelmann
JEMS-SAAS
Obere Lomattenstrasse 33
CH-3906 Saas-Fee
Switzerland
info@jems-saas.ch

July 18, 2016

Contents

1	Introduction	3
2	Extracting jems from the jemsWindows7.zip distribution	4
3	Moving jemsWindows7 to C : \Program	5
3.1	Default crystal	8
4	Requesting a license code	10
4.1	Copy Paste	12
5	Remarks	14
5.1	WiFi internet connection	14

1 Introduction

This document describes the procedure to follow in order to:

- Extract all files from the jemsWindows7.zip distribution (section 2).
- Verify that jemsWindows7 tree of folders properties and security have been set properly (section 3).
- Request a license code and serial number (section 4).

2 Extracting jems from the jemsWindows7.zip distribution

jems must be extracted using **Extract All...** (move the mouse on the jemsWindows7.zip file (Fig. 1) and right click it to activate the popup menu). Extraction can take several minutes depending on the anti virus program settings¹.

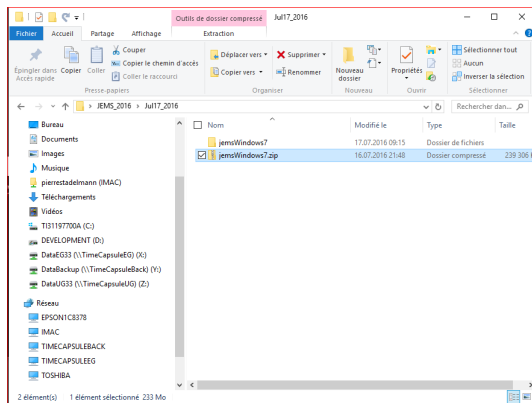


Figure 1: After jemsWindows7.zip **Extract All** the folder jemsWindows7 contains the whole jems distribution.

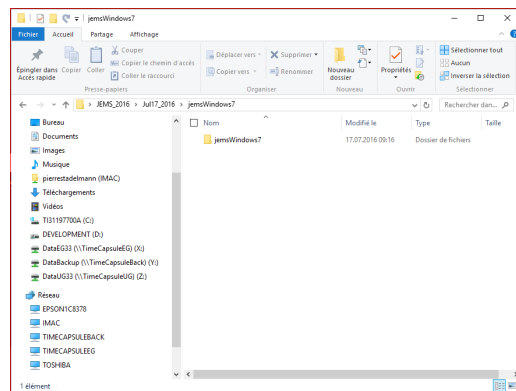


Figure 2: The folder jemsWindows7 contains the whole jems tree of folders.

Figure 3 shows the files in jemsWindows7 (Fig. 2).

1. jemsWindows: folder containing of jems files.
2. jre32: javaVM for 32 bits Windows OS.
3. jre64: javaVM for 64 bits Windows OS.
4. jems.bat: the batch file to use to start jems (a copy of jems64.bat).
5. jems.ico: jems icon.
6. jems32.bat: a batch file for 32 bits OS.
7. jems64.bat: a batch file for 64 bits OS.
8. README!.txt: small explanation of the purpose and use jems.bat.

¹When naming the extraction folder jemsWindows7 the whole tree of jems folders is placed in jemsWindows7.

Nom	Modifié le	Type
jemsWindows	17.07.2016 09:15	Dossier de fichiers
jre32	17.07.2016 09:16	Dossier de fichiers
jre64	17.07.2016 09:16	Dossier de fichiers
jems.bat	16.07.2016 20:12	Fichier de comma...
jems.ico	16.07.2016 20:08	Icône
jems32.bat	16.07.2016 20:08	Fichier de comma...
jems64.bat	16.07.2016 20:08	Fichier de comma...
README!.txt	16.07.2016 20:08	Document texte

Figure 3: jems tree of folders.

3 Moving jemsWindows7 to C : \Program

It is quite common to move (or copy) the whole jemsWindows7 folder tree to C : \Program or C : \ProgramFiles (x86) (when using a 32 bits OS). After moving the whole folder to C : \Program in order to make jems available to all the computer users, it is necessary to check the **Properties** of jemsWindows7 and to set *Modify* authorisation to the *Users* group.

When the properties (Read/Write) or security authorisations (Modification) are not set properly the following message (Fig. 4) is displayed running jems (using jems.bat).

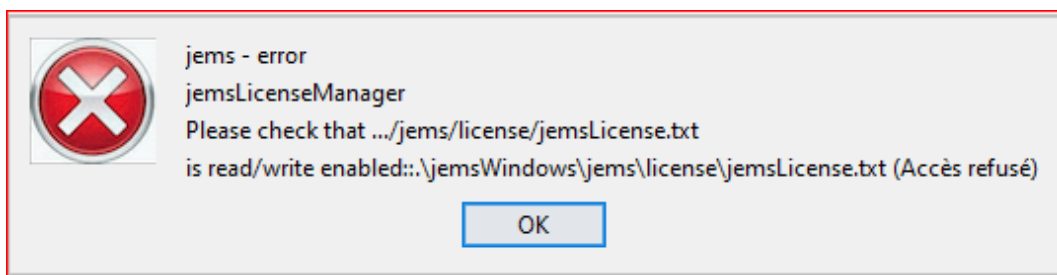


Figure 4: Read/write error message (see section 4)

In order to fix these problems select the jemsWindows7 folder and display its properties.

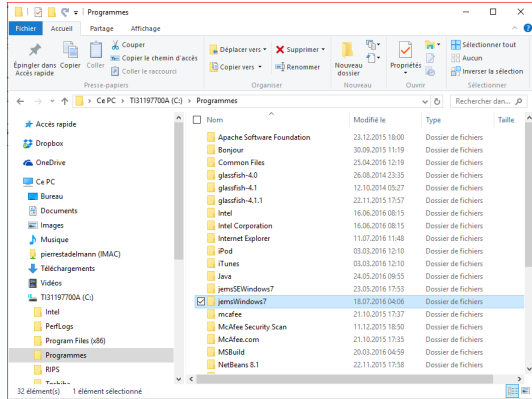


Figure 5: Select jemsWindows7 and look at its properties.

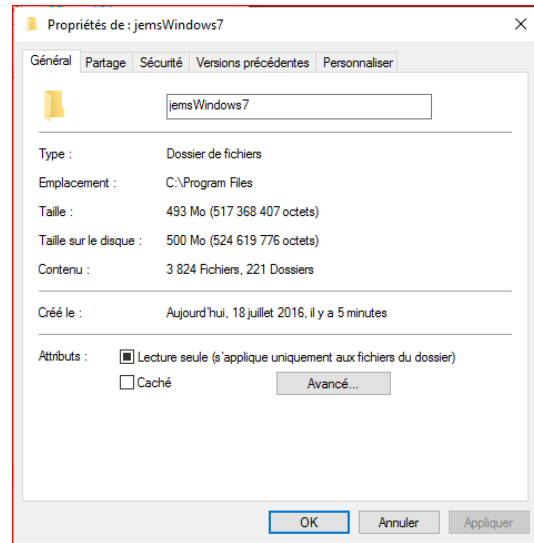


Figure 6: Properties of jemsWindows7.

It is necessary to allow users **Read and Write** access on the whole jemsWindows7 tree of folders. First one have to change the **Security** setting by allowing **Modification** authorisation to all members of the **Users** group (Figs 7 to 10).

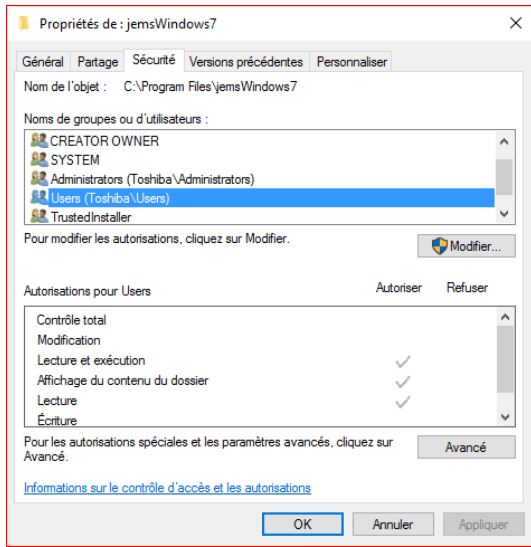


Figure 7: By default the *Users* group is not allowed **Modification** authorisation.

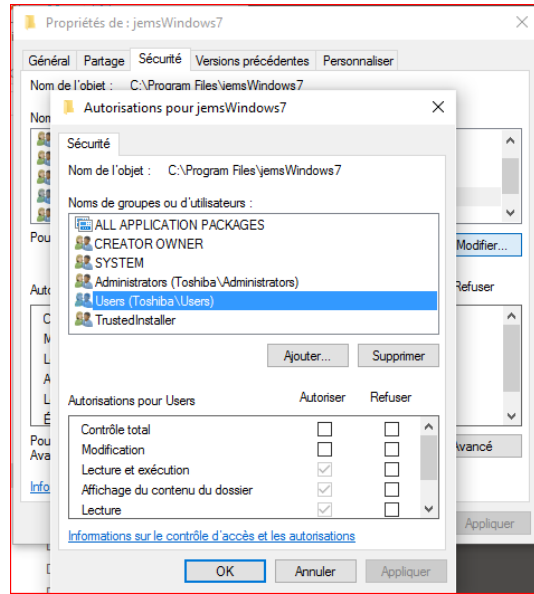


Figure 8: Set the **Modification** authorisation for group *Users* and **Apply**.

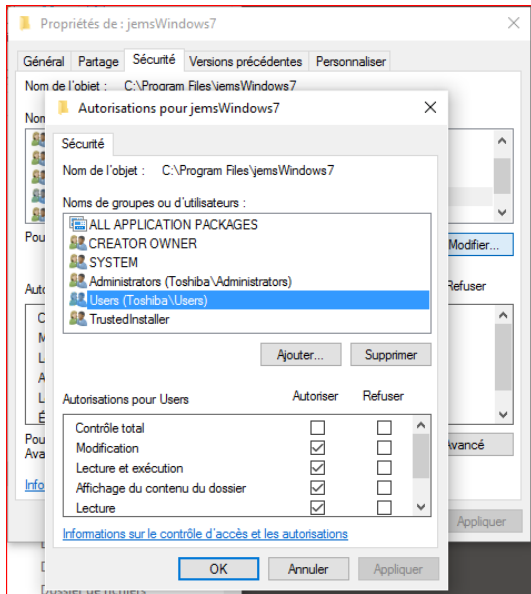


Figure 9: Setting the **Modification** authorisation.

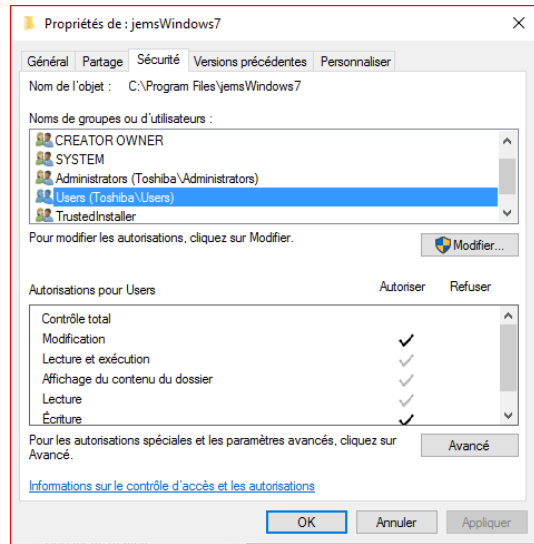


Figure 10: The modified authorisations of the *Users* group.

3.1 Default crystal

When the default crystal (i.e. the crystal file that opens when jems is started) is not defined or wrongly set the following message is displayed (Fig. 11). The *Default crystal* is set using the **Miscellany** tab of the **Preferences** dialogue (Fig. 12). After selecting the default crystal do not forget to crosscheck *Save* checkbox before closing the dialogue.

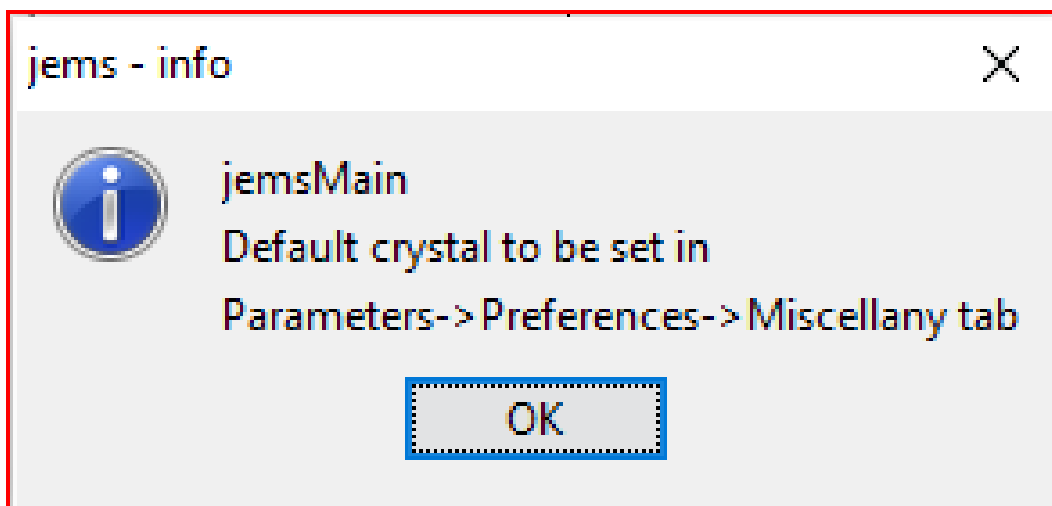


Figure 11: Default crystal error message.

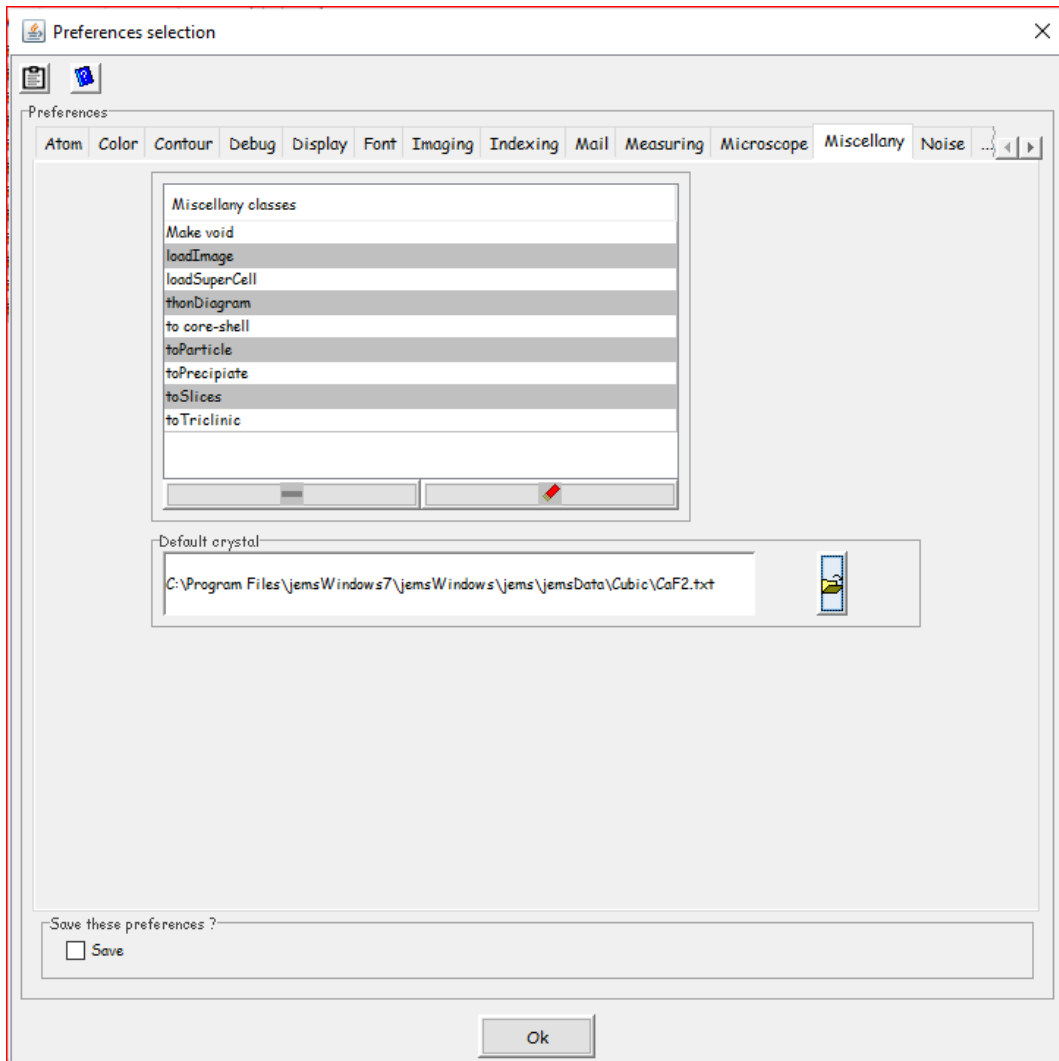


Figure 12: Default crystal error message.

4 Requesting a license code

Start jems. Activate menu item **License** of menu **Help**. The **License** dialogue contains 3 tabs (Fig. 13):

1. **License** displaying the *Host*, *Unique ID*, *Serial* and *License* text fields.
2. **Request** to send the license request.
3. **Version** displaying jems version.

The *Host* and *Unique ID* text fields show the hostname and unique ID of the computer. Some PC manufacturers do not set the *Unique ID*. The *Serial* and *License* text fields are generated on request (email). These 4 strings are case sensitive.

To request a license code select the **Request** tab (Fig. 14) and click on the *Request* button to open the dialogue (Fig. 15).

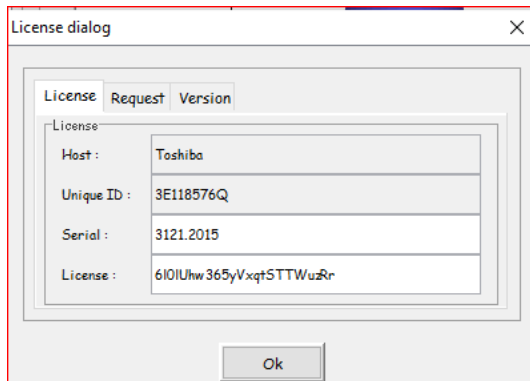


Figure 13: The **license dialog** of menu **Help**. The *License* text field is generated using the *Host*, *Unique ID* and *Serial*.

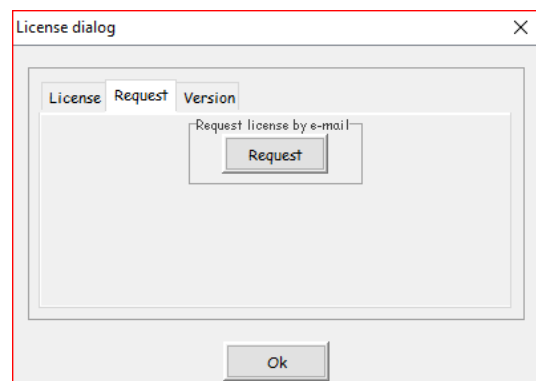


Figure 14: Requesting a license code by email.

The *Serial* and *License* are generated by **JEMS-SAAS**. It is necessary to fill the following fields before sending the request:

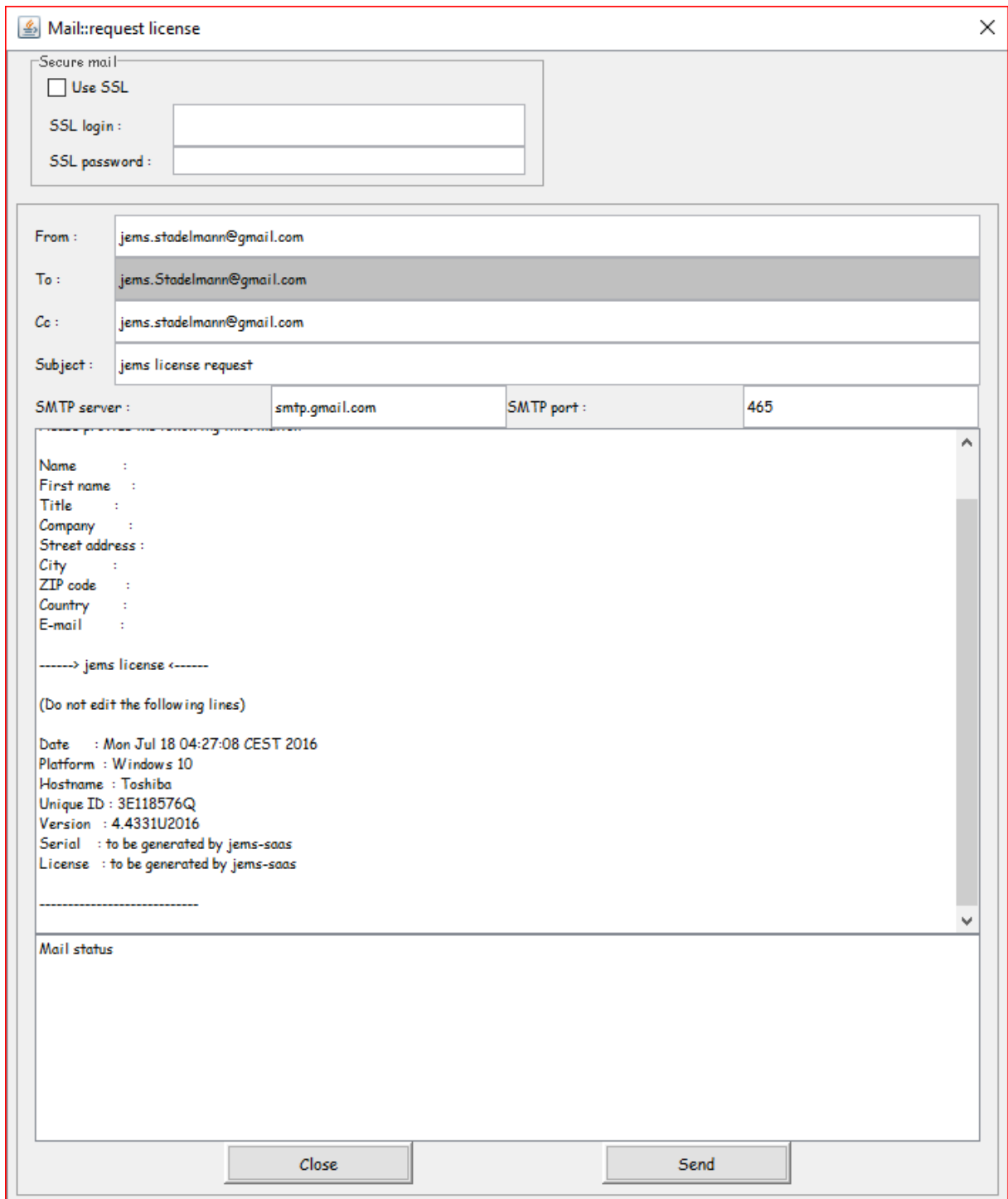


Figure 15: Requesting a license code using menu item *License* of menu *Help*.

- **From** : your email address.
- **Cc** : your email address (to receive a copy of the email).
- **SMTP server** : the *Small Message Transfer Protocol* server. Ask your IT administrator.
- **SMTP port** : the *Small Message Transfer Protocol* port. Ask your IT administrator.
- **Name** : your family name.
- **First name** : your given name.
- **Title** : your title.
- **Company** : your company.
- **Street address** :, **City** :, **ZIP code** :, **Country** : your full address (for DVD delivery when asked).
- **E-mail** : email address (to whom the license code must be sent).

The **SMTP** and **From** text fields can be permanently defined using the **Mail** tab of the *jemsPreferences* dialogue (Fig. 16). Before closing the dialogue set the **Save** checkbox.

When the PC is behind a Firewall, it may be necessary to use SSL mails (**Secure Socket Layer**). Your email login and password are required (Figs 17 and 18).

4.1 Copy Paste

It is also possible to copy/paste the *Name* :, ..., *E-mail* : text area to your regular email program.

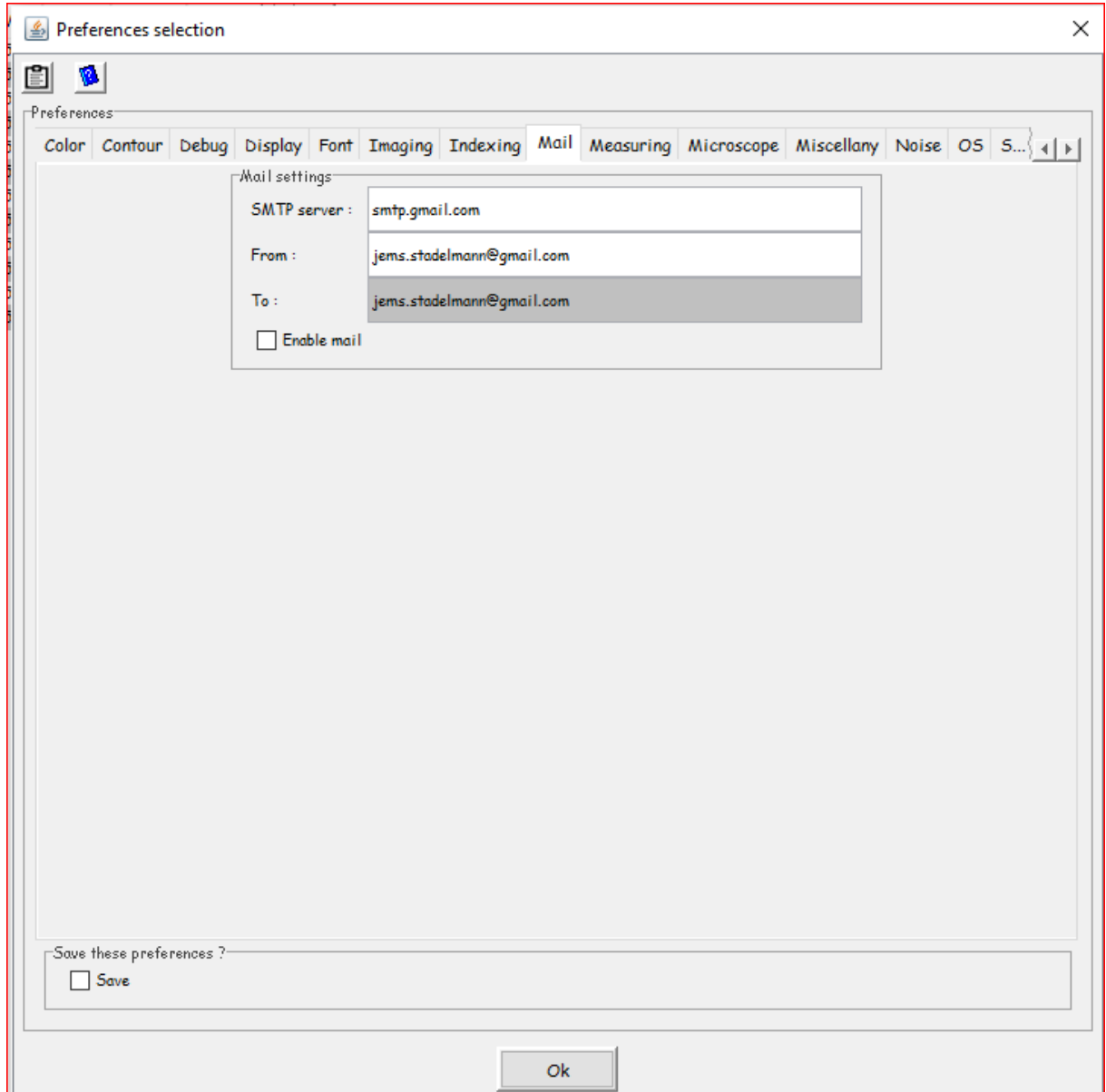


Figure 16: Setting the **SMTP** and **From** informations using the **Preferences** dialogue.

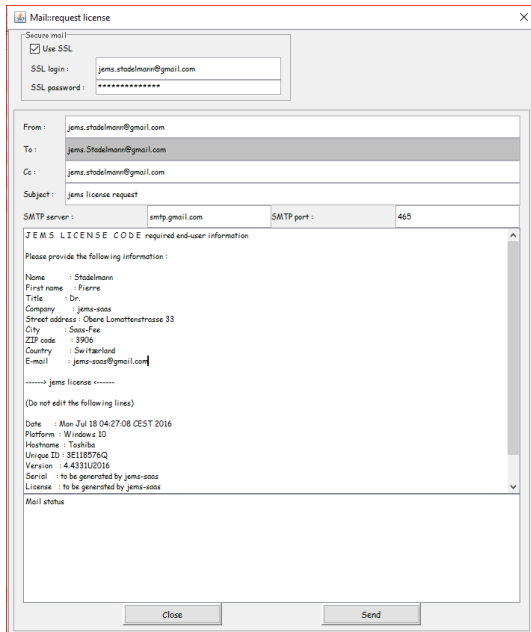


Figure 17: Using SSL requires to enter your SSL email login and password.

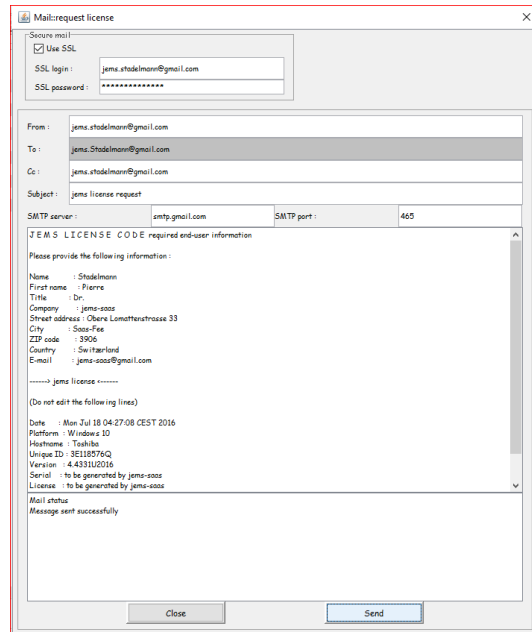


Figure 18: The *Message sent successfully* is displayed to confirm sending.

5 Remarks

5.1 WiFi internet connection

WiFi internet connection using DHCP attributes a dynamic hostname to the PC. Since jems license code is based on its static hostname, it is necessary, when both internet and jems need to run simultaneously, to stop WiFi, start jems and then restart WiFi.

This is also necessary when requesting the license code:

1. Stop WiFi.
2. Start jems, fill the request license form.
3. Start WiFi.
4. Send the form (either directly from jems when allowed by the firewall, or copy/paste the form in your regular mail program).